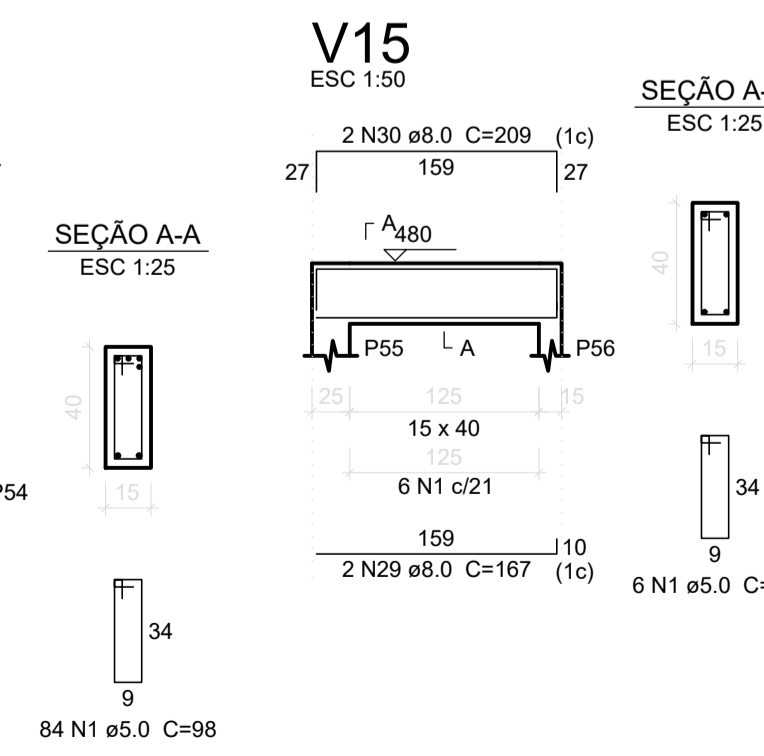
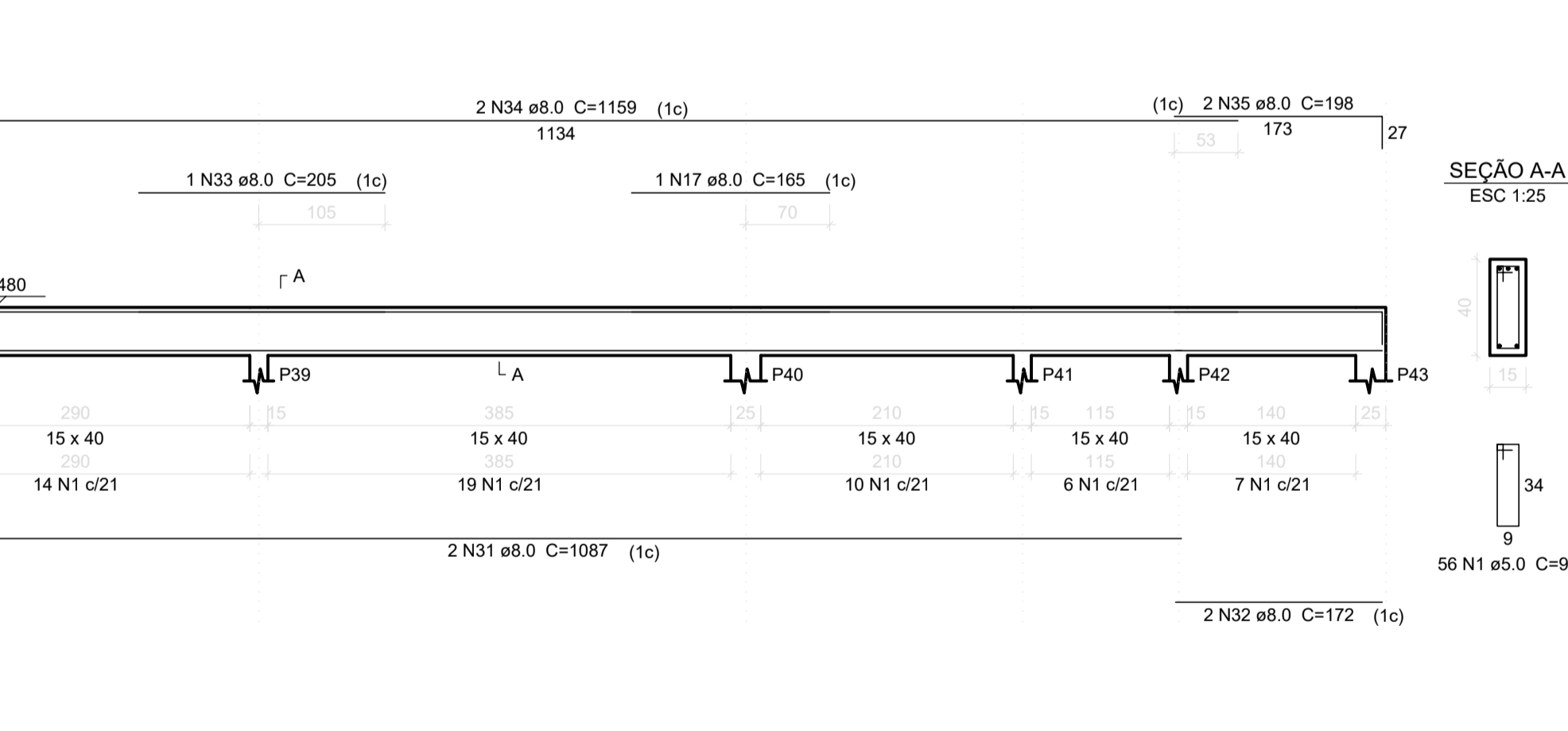
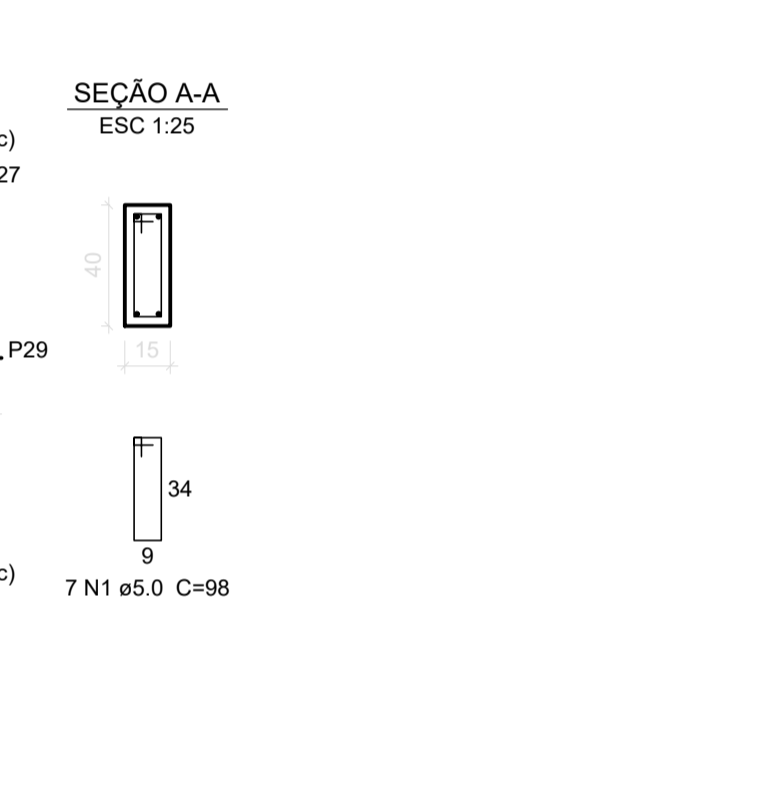
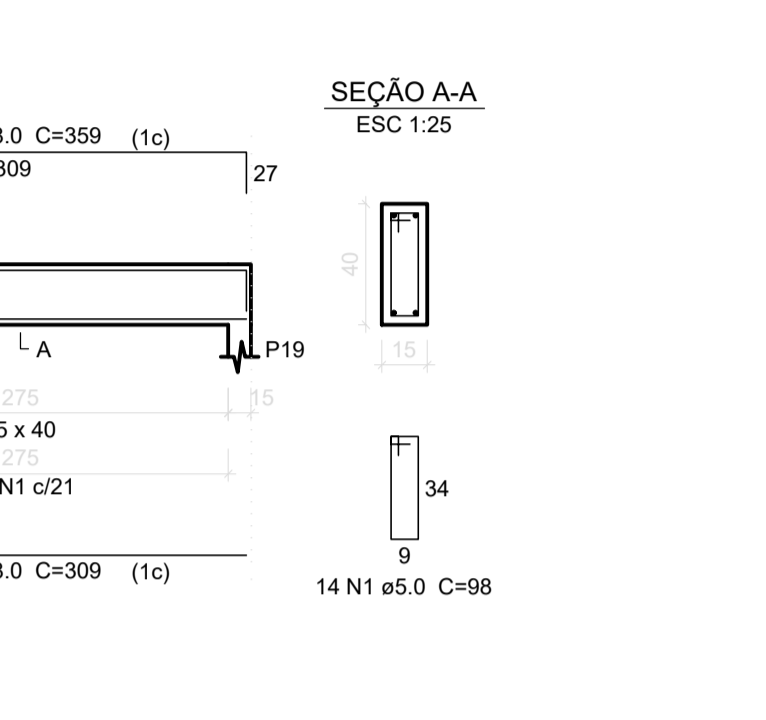



AÇO	N	DIAM (mm)	QUANT (Barras)	UNIT (cm)	C.TOTAL (cm)
CA60	1	5.0	548	98	53704.0
	2	6.3	1	76	76
CA50	3	8.0	4	1132	4528.0
	4	8.0	4	1002	1608.0
	5	8.0	1	180	180
	6	8.0	4	1198	4792.0
	7	8.0	2	452	904
	8	8.0	8	309	2472.0
	9	8.0	8	358	2874.0
	10	8.0	1	160	160
	11	8.0	2	200	400
	12	8.0	2	446	892
	13	8.0	2	659	1318
	14	8.0	2	709	1418
	15	8.0	2	930	1860
	16	8.0	2	937	1874.0
	17	8.0	2	165	330
	18	8.0	4	1198	4792.0
	19	8.0	2	771	1542
	20	8.0	2	174	348
	21	8.0	2	224	448
	22	8.0	1	420	420
	23	8.0	2	920	1840
	24	8.0	2	607	1214
	25	8.0	1	590	590
	26	8.0	1	525	525
	27	8.0	1	170	170
	28	8.0	2	441	882
	29	8.0	6	167	1002
	30	8.0	6	209	1254
	31	8.0	2	1087	2174
	32	8.0	2	172	344
	33	8.0	2	205	410
	34	8.0	2	1159	2318
	35	8.0	2	198	396
	36	8.0	2	1100	2200
	37	8.0	2	292	584
	38	8.0	2	210	420
	39	8.0	2	1198	2396
	40	8.0	2	770	1540
	41	10.0	2	462	924

Resumo do acc

AÇO	DIAM (mm)	C.TOTAL (m)	PESO + 10 % (kg)
CA50	6.3	0.8	0.2
	8.0	532.2	231.1
	10.0	9.3	6.3
CA60	5.0	537.1	91.1
PESO TOTAL (kg)			
CA50	237.4		
CA60	91.1		

Volume de concreto (C-25) = 7.32 m³
Área de forma = 115.9 m²



 <p><i>Secretaria Municipal de Engenharia Ribeirão 204, de 558 Canga, Belo - MG Tel. (32)3631-8150 E-mail: smp.engenharia@gmail.com site: www.cangabelo.org.br</i></p>	OBRA CANIL E PRONTO ATENDIMENTO VETERINÁRIO MUNICIPAL				FOLHA 07/11
	GESTOR —		GIGOV —		
PROGRAMA —		Nº OPERAÇÃO —		Nº SICONV —	
ENDEREÇO ESTRADA MUNICIPAL DARUIHE ELIAS LASMAR					
PROPRIETÁRIO PREFEITURA MUNICIPAL DE CAMPO BELO				CNPJ 18.659.334/0001—37	
AUTOR DO PROJETO KESLEY ANTONIO DE ALMEIDA DORNELAS				CREA — MG 321241/D—MG	
DESENHO KESLEY ANTONIO DE ALMEIDA DORNELAS					
CONTEÚDO ESTRUTURAL — FORMA DE PAVIMENTO FUNDAÇÃO		REVISÃO 0		ESCALA INDICADA	
				UNIDADE METROS	
				DATA AGO / 2025	